

**IKB beta Antibody**  
**Rabbit mAb**  
**Catalog # AP90678****Specification**

---

**IKB beta Antibody - Product Information**

Application	WB, IHC, ICC, IP
Primary Accession	<a href="#">Q15653</a>
Clonality	Monoclonal
<b>Other Names</b>	
I-kappa-B-beta; Ikb-B; Ikb-beta; IKBB; NF-kappa-BIB; NFKBIB; Thyroid receptor-interacting protein 9; TR-interacting protein 9; TRIP;	
Isotype	Rabbit IgG
Host	Rabbit
Calculated MW	37771 Da

**IKB beta Antibody - Additional Information**

Dilution	WB~~1:1000 IHC~~1:100~500 ICC~~N/A IP~~N/A
Purification	Affinity-chromatography
Immunogen	A synthesized peptide derived from human IKB beta
Description	kB-beta a protein of the NF-kappa-B inhibitor family. Inhibits NF-kappa-B by complexing with and trapping it in the cytoplasm. However, the unphosphorylated form resynthesized after cell stimulation is able to bind NF-kappa-B allowing its transport to the nucleus and protecting it to further IKBA- dependent inactivation.
Storage Condition and Buffer	Rabbit IgG in phosphate buffered saline , pH 7.4, 150mM NaCl, 0.02% sodium azide and 50% glycerol. Store at +4°C short term. Store at -20°C long term. Avoid freeze / thaw cycle.

**IKB beta Antibody - Protein Information****Name** NFKBIB**Synonyms** IKBB, TRIP9**Function**

Inhibits NF-kappa-B by complexing with and trapping it in the cytoplasm. However, the

unphosphorylated form resynthesized after cell stimulation is able to bind NF-kappa-B allowing its transport to the nucleus and protecting it to further NFKBIA-dependent inactivation. Association with inhibitor kappa B-interacting NKIRAS1 and NKIRAS2 prevent its phosphorylation rendering it more resistant to degradation, explaining its slower degradation.

**Cellular Location**

Cytoplasm. Nucleus.

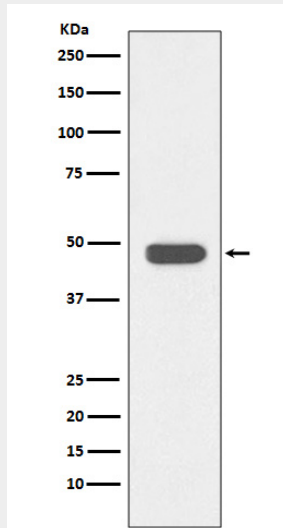
**Tissue Location**

Expressed in all tissues examined.

**IKB beta Antibody - Protocols**

Provided below are standard protocols that you may find useful for product applications.

- [Western Blot](#)
- [Blocking Peptides](#)
- [Dot Blot](#)
- [Immunohistochemistry](#)
- [Immunofluorescence](#)
- [Immunoprecipitation](#)
- [Flow Cytometry](#)
- [Cell Culture](#)

**IKB beta Antibody - Images**

Western blot analysis of IKB beta expression in Jurkat cell lysate.